

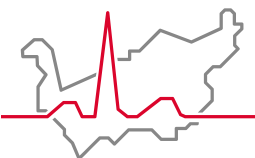
# The 'Dr Emmanuelle de Wolff & Kiwanis' flat

FOR THE PARENTS OF CHILDREN  
IN SION HOSPITAL



This guide will provide you with useful information for your stay in the 'Dr Emmanuelle de Wolff & Kiwanis' flat for the parents of children in Sion Hospital.

**Paediatrics Department**  
**Hospital Centre of the French-speaking Valais Region**



Hôpital du Valais  
Spital Wallis

[www.hopitalvs.ch](http://www.hopitalvs.ch) | [www.spitalvs.ch](http://www.spitalvs.ch)

## **Impressum**

Editor: Valais Hospital, General Management, Sion

Author: Paediatrics Department, Children Pool, CHVR

Photos: Valais Hospital, Fotolia

Ref.: 638 510 – 03/2020

© All rights reserved. None of the text in this document may be reproduced without the permission of the Valais Hospital's Communications Department.

# SUMMARY

<b>Welcome</b> .....	4
<b>Introduction</b> .....	5
Explanation of the concept .....	5
<b>Procedure for your visit</b> .....	6
Admission .....	6
End of stay in the flat .....	6
<b>The 'Dr Emmanuelle de Wolff &amp; Kiwanis' flat</b> .....	7
Location .....	7
Parking and transport .....	7
The flat .....	8
Flat's plan .....	9
<b>Rules and instructions</b> .....	10
Right of access .....	10
Maintenance and cleaning .....	10
Waste management .....	10
Material damage .....	10
No smoking permitted .....	10
Liability in case of theft .....	10
Renting the room without parking .....	11
Renting the room with parking at Sion Hospital .....	11
Invoicing .....	11
<b>Contacts</b> .....	12

# WELCOME

Dear parents,

Your child is hospitalised at the Sion Hospital. The healthcare personnel of the Paediatrics Department in Children Pool will do everything they can to make sure that he or she gets better as soon as possible.

During this hospital stay, your presence at your child's side is very important. Thanks to the support of the Fondation Doctoresse Emmanuelle de Wolff, the Kiwanis Club Sion Valais and the Kiwanis International Foundation, the Valais Hospital has a parental accommodation centre available, which is just a short 7-minute walk from the Sion Hospital.

For any questions or further information regarding your child's hospital stay or the flat itself, please see the contacts page on the back of this brochure.

We hope that your stay is as pleasant as possible, and we send our best wishes for your child's speedy recovery.



Dr Juan Llor  
Chief of Medicine Departement  
Coordinator of Children Pool



Catherine Lietta  
Head Nurse Departement  
Coordinator of Children Pool

With our deepest gratitude for the support of:



**FONDATION**  
DR EMMANUELLE DE WOLFF



**Kiwanis**<sup>®</sup>

# INTRODUCTION

## Explanation of the concept

The 'Dr Emmanuelle de Wolff & Kiwanis' flat provides reasonably-priced temporary accommodation for parents travelling from a great distance whose child is staying at the Sion Hospital.

Parents are provided with a comfortable space which is located just 7 minutes' walking distance from the Sion Hospital, to sleep, prepare meals and, above all, be close to their child. The flat is also a place for sharing and be connected to other parents in a similar situation. Each bedroom has a private bathroom. The living room and kitchen are shared spaces.

Our objective is to provide sick children with the ability to have their parents, brothers and sisters at their side during the treatment period and/or hospitalisation because we truly believe that medical treatments are more efficient when a child is surrounded by his or her family.



# PROCEDURE FOR YOUR VISIT

## Admission

Parents who wish to stay in the flat are admitted only upon recommendation of the Paediatrics Department of the Sion Hospital. The duration of their stay is determined based on the length of their child's hospital stay.

**The Paediatrics Department will provide you with an envelope** containing:

- the 'Identity – Flat for the parents of children in hospital' form;
- the 'Dr Emmanuelle de Wolff & Kiwanis' flat guide;
- electronic passkeys to access the flat;
- the pass to access the Sion Hospital car park (if requested);
- Access map.

You will be asked to sign a document confirming the receipt of this envelope.

## End of stay in the flat

Your stay in the flat will end on the day that your child is discharged from the hospital. Please deposit the electronic passkeys and the parking pass to the main reception of the Sion Hospital.

On the back of this document, you will find the telephone numbers you may need in case of any questions or problems during your stay.

# THE 'DR EMMANUELLE DE WOLFF & KIWANIS' FLAT

## Location

'Athéna' building, **Route de Préjeux 50, 1950 Sion**

'Dr Emmanuelle de Wolff & Kiwanis' flat, on the **2<sup>nd</sup> floor**

The flat is only **7-minutes' walking distance from the Sion Hospital.**

## Parking and transport

**The flat does not have a designated parking space for your personal vehicle.** Restricted parking zones are available in the neighbourhood.

There is a fee for parking at the hospital. If you wish, you may receive a parking access pass upon your admission, which will allow you to park your car at a preferential rate of 2.50 CHF per day during your stay (see page 11 – Renting a room with parking at the Sion Hospital).



## **The flat**

### **3 private bedrooms**

All 3 bedrooms are private and each includes an ensuite bathroom. Bed linens and bath towels are provided and are replaced every 7 days.

- **Bedroom n° 1:** 2 bedrooms (max. 2 adults, 1 child and 1 infant)
- **Bedroom n° 2:** max. 2 adults
- **Bedroom n° 3:** max. 2 adults

A lockable cabinet, located in the bedroom or in the hall, is available. To prevent theft, the cabinets and the bedrooms must be locked when you leave the flat.

In order to ensure a friendly and pleasant environment, we ask that you remain quiet, keep the area clean and only store your personal belongings in your room.

### **Common spaces**

Common spaces, such as the kitchen, living room, dining room and the spacious terrace, are to be shared with the other families.

### **Living room**

With television and Wi-Fi access.

### **Furnished kitchen and dining room**

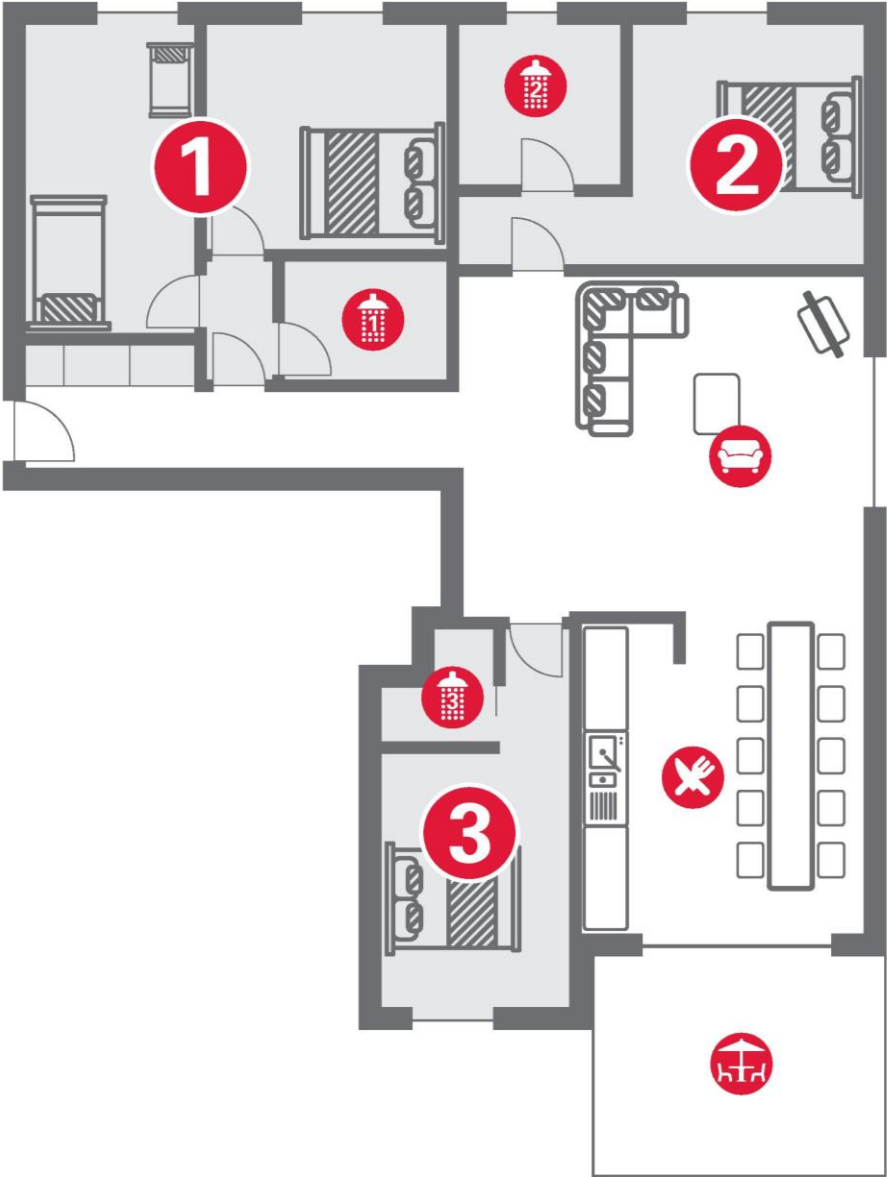
- You are responsible for your own food.  
If you place it in the refrigerator, please keep it all together so that other parents also have room for theirs.
- Please wash the dishes after each use (there is a dishwasher available).
- A washing machine and a dryer are at your disposal.

### **Terrace**

- Please keep the sliding door closed.
- Please do not lean over the railing.
- Children are under your own responsibility.



Flat's plan



# RULES AND INSTRUCTIONS

## **Right of access**

Only parents admitted on the recommendation of the Paediatrics Department are authorised to access the flat.

Visitors and/or external persons will not be admitted.

Pets (dogs, cats, etc.) are not permitted.

## **Maintenance and cleaning**

Maintenance of the bedroom and the kitchen as well as removing kitchen waste is the responsibility of the tenant during his or her stay.

Upon departure, the accommodation must be restored to a condition equal to that which was presented upon the tenant's arrival.

A washing machine and a dryer are available in the flat. The appliances must be used correctly and cleaned after each use.

Common space is serviced once per week by the Management Department of the Sion Hospital.

## **Waste management**

Containers are located outside.

## **Material damage**

Any damage to the interior of the flat must be reported immediately by telephone to the Technical Repair Department of the Sion Hospital (+41 (0)27 603 87 30).

Intentional damage is invoiced to the tenant at cost.

## **No smoking permitted**

Smoking in the bedrooms and in the common area is strictly prohibited.

## **Liability in case of theft**

The Valais Hospital accepts no liability in case of theft.

**Renting the room without parking**

The cost of accommodation is 33.00 CHF per night, per family.

**Renting the room with parking at Sion Hospital**

The cost of accommodation is 35.50 CHF per night, per family.

The tenant will receive a pass for parking his or her vehicle in the Sion Hospital car park.

**Invoicing**

An invoice will be sent to your home.

## CONTACTS

**For questions relating to your child's stay at the hospital:**

**Paediatrics Department, Sion Hospital**

+41 (0)27 603 41 65

**For questions relating to the flat:**

**Administrative Management (business hours)**

+41 (0)27 603 97 97

**Management**

+41 (0)27 603 41 21

**Technical Repair Department of the Sion Hospital**

+41 (0)27 603 87 30

**Reception desk of the 'Athéna' building**

+41 (0)79 961 02 16